

# Business Portal

## BENEFITS

- Unlock the potential of all your employees**  
 Accelerate productivity across your business by providing employees with immediate access to business applications and updated, accurate information.

- Take advantage of Windows SharePoint Services**  
 Deliver powerful information-sharing and collaboration tools that foster teamwork and improve performance with Microsoft Windows® SharePoint™ Services and Microsoft Office System 2003.

- Take the hassle (and expense) out of common tasks**  
 Timecard entry, expense reports, ad hoc database queries, and other tasks can be delivered through the user's Web browser, reducing the time it takes to manage these processes and eliminating related paperwork and data re-entry.

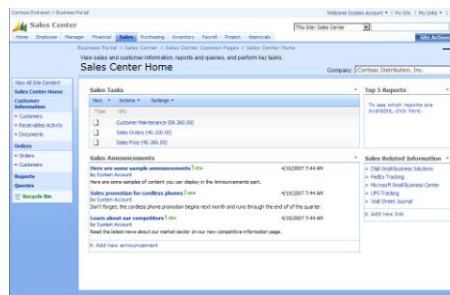
- Reduce information support costs**  
 By opening the flow of useful business information to your employees, you'll reduce the stream of requests for custom reports and calls for simple business facts, freeing your IT, accounting, and support resources to drive your business forward.

- Share business information with customers and suppliers**  
 Work more effectively with customers, suppliers, and other business partners by granting secure access to business information such as order status, inventory levels, and payment data.

## Microsoft Dynamics™ SL

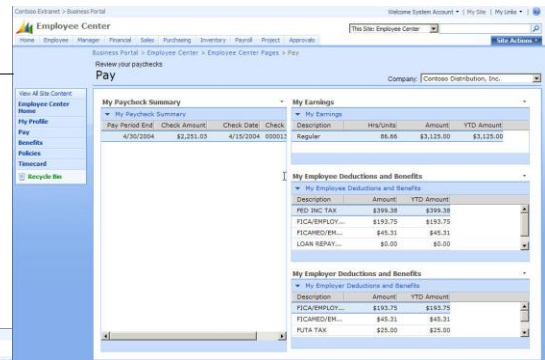
**Unlock business potential and enhance productivity by providing role-based access to information and processes from a single Web-based portal.**

Business portal integrates seamlessly with Microsoft Dynamics SL to deliver applications, information, and processes to employees, customers, and partners across the organization.

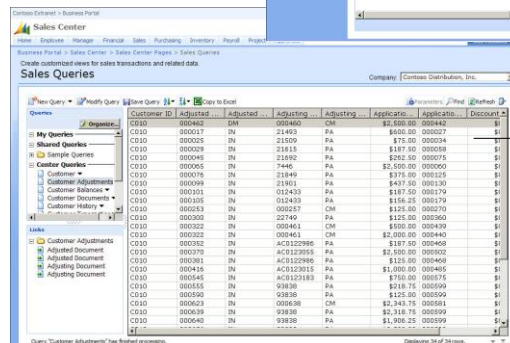


*Share the right information with the right people by assigning role-based privileges.*

*Take routine HR tasks online- employees can update profiles, enter time cards, view pay stubs, and more.*



*Drive fast, informed decisions by enabling users to look up information themselves.*



## Give your organization a framework for information sharing and collaboration

Business Portal 3.0 is built on Windows SharePoint Services, enabling you to deploy one portal site to deliver access to business applications, information, and processes across the organization. Windows SharePoint Services offers easy-to-use features that enable employees to work together on documents, share ideas, and distribute targeted information to the right people.



## Share and collaborate on documents

Business Portal is installed as a Windows SharePoint site, enabling you to store, share, and edit Microsoft Word, Microsoft Excel, and other documents by adding Document Libraries to portal pages.

## Create new pages and parts more easily

Business Portal Web parts are built as native SharePoint Web parts, with drag-and-drop page design that saves time and lets you to create pages that work the way you want them to.

## Add Excel graphs to Portal pages

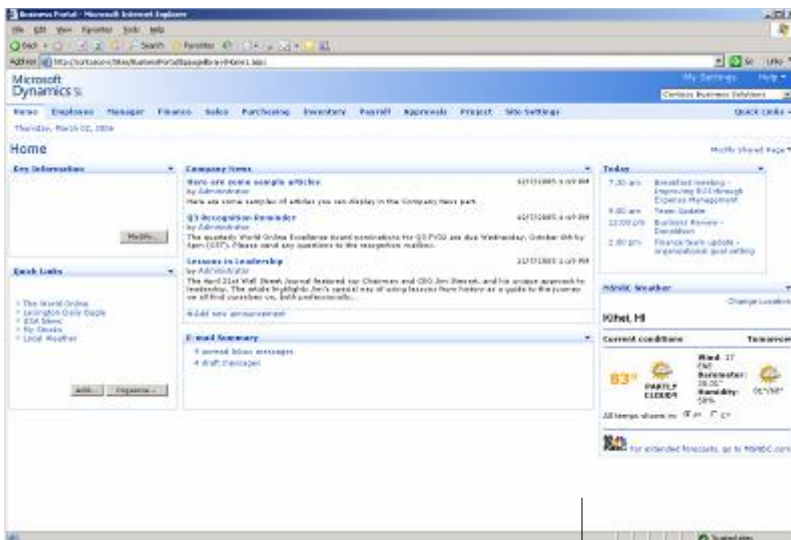
Business Portal Web parts can be connected to SharePoint Excel Web parts, giving your customers new charting abilities for business data.

## Add sites for projects and meetings

Create pages with all the resources that team members need — including Calendars, Participant Lists, Announcements, Document Libraries, and other Web parts — to record activities, share and edit documents, track meeting notes, and provide links to other relevant sites.

## Connect to external data sources

Expand the reach of business information by exposing not only Microsoft Dynamics SL data, but other sources of business information to your business portal site.



Windows SharePoint Services  
*is the foundation for business portal, making it easy to share documents, announcements, news and other applications across the organization.*

## Give executives “at-a-glance” access to key business metrics

Enable executives and business decision makers to assess the current health of your business and respond quickly when conditions change with Key Performance Indicators for Business Portal.

### Multiple Views and Alert Ranges

Using graphs, tables, and “green/yellow/red” conditional alerts, companies can create Key Performance Indicators (KPIs) that draw attention to the most important aspects of each information view. Decision makers can then drill down quickly to discover underlying causes of changing conditions.

### Easy to define

Once you’ve built the underlying queries, it’s a simple process to define and deploy the KPIs most important to your business success, making it easy for decision makers to identify “hot spots” and act quickly to drive your business forward.

### Role-based Access

Individual KPIs can be created for each executive, depending on their areas of responsibility. Role-based access enables you to align the right information with each individual.

### Easy Updating

KPIs can be refreshed as often as needed, so decision makers will always be working with current, accurate information.



## Give employees and managers a portal they’ll use

Empower employees and managers to streamline human resource management tasks with the HRM Self Service Suite for Business Portal.

### Time and Attendance

Enable employees to enter their own time cards online- including the hours they have worked, the pay type (regular time, overtime, holiday, and so forth), and location. Once submitted, timecards are automatically routed for approval and processing through the payroll system.

### Employee Self Service

Allow employees to view and change information such as addresses, phone numbers, and emergency contacts, submit time-off requests, and view pay stubs and benefits information.

### Manager Self Service

Enable managers to approve timecards and time-off requests, view direct reports’ emergency contacts and compensation history, evaluate team skills, and check applicant status for internally posted positions, helping them work more effectively with direct reports and make critical staff decisions.

## FEATURES

## BENEFITS

---

<b>Increase availability of information throughout your business</b>	<ul style="list-style-type: none"><li>• Publish sales reports, outstanding purchase orders, budget reports and financial reports.</li><li>• Run queries to access detailed information on customers, vendors, inventory items, sales, and purchases. Modify and export queries to Microsoft Excel for further analysis.</li><li>• Deliver instant access to personalized views of key business information with the Key Performance Indicators module.</li><li>• Deliver role-based information to salespeople, purchasing agents, budget managers, customers, and any other role you create.</li><li>• Add Windows SharePoint pages that include all the resources that team members need to share information and collaborate on projects and meetings.</li></ul>
<b>Enable employees to complete common tasks more efficiently</b>	<ul style="list-style-type: none"><li>• Enable employees to enter timecards and expense reports, update personal information, and review pay, benefits, vacation, and sick time information.</li><li>• Workflow management improves efficiency for routine processes such as timecard and expense report approval.</li></ul>
<b>Deliver Web-browser access to business applications</b>	<ul style="list-style-type: none"><li>• Eliminate the need to load Microsoft Dynamics SL on every user's desktop machine by delivering access through Business Portal, via Windows Terminal Server.</li><li>• Enable users to easily access the Microsoft Dynamics SL windows they use most often to do their jobs by creating quick links within Business Portal pages.</li></ul>
<b>Tailor Business Portal to your business</b>	<ul style="list-style-type: none"><li>• Identify which tasks and information you wish to share by role, and add reports, queries, and tasks to each role-based page.</li><li>• Include links to other Web-delivered applications, intranets, and external data sources.</li><li>• Enable users to design customized layouts and add Web parts to their pages.</li></ul>
<b>Streamline portal administration tasks</b>	<ul style="list-style-type: none"><li>• Browser-based delivery eliminates the need to load and update applications on each desktop computer.</li><li>• Deliver out-of-the-box access to data and processes.</li><li>• Quickly set up user access by matching User IDs to their corresponding Employee ID in Payroll in Microsoft Dynamics SL.</li></ul>
<b>Extend access to information</b>	<p>Access to Microsoft Dynamics SL Project Maintenance program is available from remote locations 24x7 through Business Portal without logging into Microsoft Dynamics SL, so managers can set up new projects or alter current information from a client site, for example.</p>

---

For more information about Microsoft Dynamics™ SL, visit: <http://www.microsoft.com/dynamics/sl>

This document is for information purposes only.

MICROSOFT MAKES NO WARRANTIES, EXPRESS, IMPLIED, OR STATUTORY, AS TO THE INFORMATION IN THIS DOCUMENT.

© 2007 Microsoft Corporation. All rights reserved.

Microsoft, The Microsoft Dynamics Logo, are either registered trademarks or trademarks of Microsoft Corporation or Microsoft Business Solutions ApS in the United States and/or other countries. Microsoft Business Solutions ApS is a subsidiary of Microsoft Corporation.

